

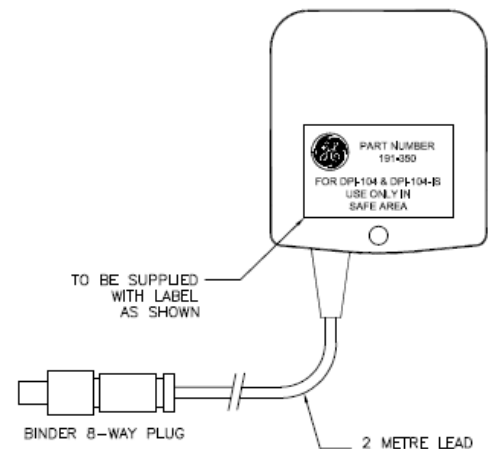


DPI104 Accessories

Option A:

DPI 104 external power supply unit
with lead

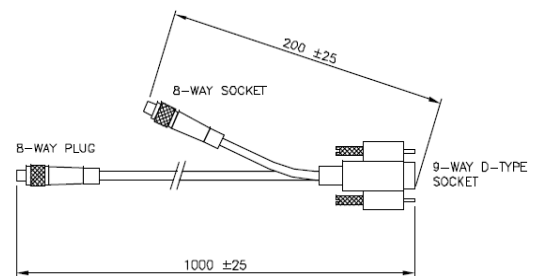
PN: S_191-350



Option B

PC serial lead for connection to PC

PN: S_IA4090-2-V0



Comment:

Option A is recommended with PC serial lead, IA4090-2-V0, and 191-350 (safe area only)

Option E

Mating plug for eight-pin socket for switch testing, voltage output, external power and alarm function (customers wishing to make their own connections/leads)

PN: S_1S-04-0027

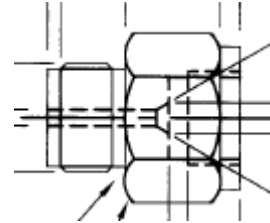


DPI104 Accessories

Option F

9/16 x 18 UNF to 3/8 BSP adapter for connection to PV 212

PN: S_182-190



Option G

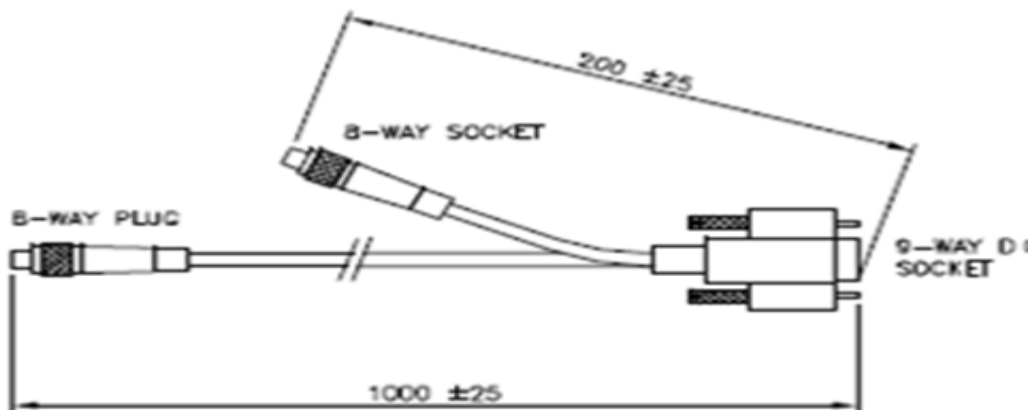
DPI 104 UPM power lead for use with UPM IDOS Sensor (Requires Option H).

PN: S_IA4101-1-V0

Comment:

This is the breakout cable that provides access to alarm output, switch input and voltage output. It also allows a UPM to be connected to the DPI104 to be used as an external pressure module.

NOTE: Option H is required since this provides power to the UPM (and DPI104) via connecting to the RS232 socket.





DPI104 Accessories

Option H

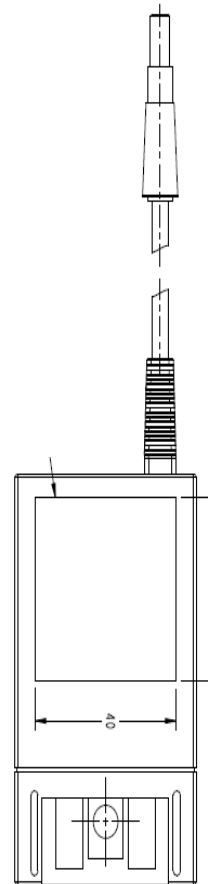
Universal 12V external power supply

PN: S_191-129

Comment:

This is a 12V power supply that will power both the DPI104 and UPM when used in conjunction with IA4101-1-V0 (the breakout cable).

NOTE: *It is not possible to connect the DPI104 to a PC when IA4101-1-V0 is connected. This power supply does not connect directly to the DPI104. It is actually the power supply for a DPI610.*



Option 853-134

Protective Overboot DPI 104 Series. Silicone Rubber Anti-Static

PN: S_853-134

